

RECEIVED
LARAMIE COUNTY
CHEYENNE, WY.

CERTIFIED LAND CORNER RECORDATION

DESCRIPTION OF CORNER EVIDENCE FOUND, AND ORIGINAL RECORD (If known) **NOV 9 AM 9 08**

S.24 S.19
S.25 S.30
S.17N.
R.62W., R.61W.
6th P.M.

Found no evidence of previous monumentation.

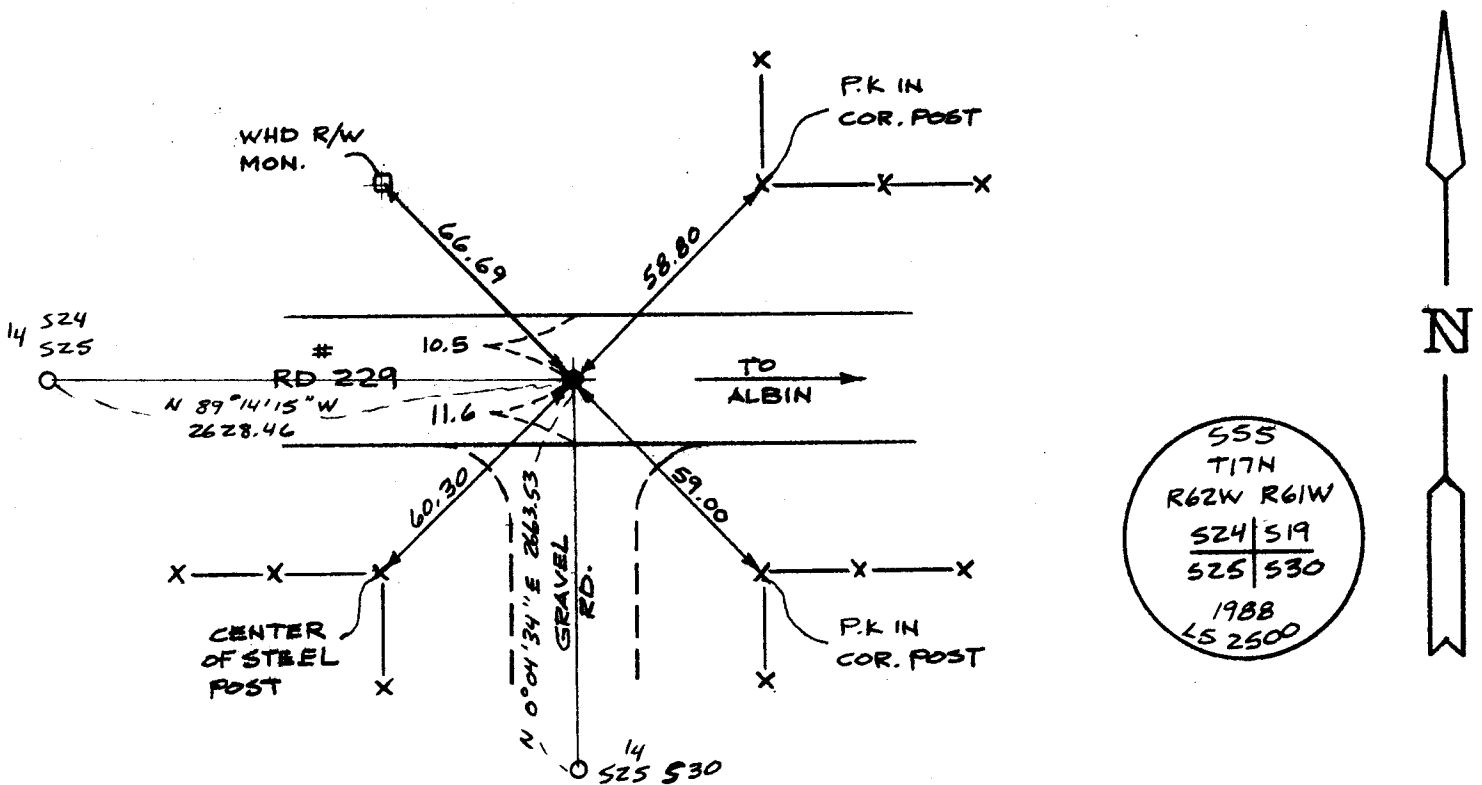
G.L.O. Record: Sandstone 20" x 14" x 6", 15" deep with 2 marks on the South & 4 on the North edge. Set by J. Westley Hammond, Deputy Surveyor, June 12, 1873.

DESCRIPTION OF MONUMENT AND ACCESSORIES ESTABLISHED TO PERPETUATE THE ORIGINAL LOCATION OF THIS CORNER:

At the corner: Set 5/8" rebar with 2" Aluminum Cap 0.05' deep in asphalt stamped as shown below at centerline of E-W Co. Rd. # 229 & Road South.

Accessories : See ties below.

SKETCH, WITH COURSE AND DISTANCE TO ADJACENT CORNER IF DETERMINED IN THIS SURVEY. (May Sketch or Paste Reproduction on Reverse Side.)



I, John A. Steil certify that I have carefully performed or reviewed the work done on the diagrammed corner as reported on this recordation form and approve the same.

John A. Steil
Signature of Surveyor

L.S. 2500
Registration No.

STATE OF WYOMING,
Office of Clerk and Recorder,
County of _____

This "corner record" was filed for record on the _____ day of _____, 19____, was noted on the cross-index plat and is assigned page No. _____, in book No. _____.

Cross Index No.	County Official			
	R-1	T.	R.	Mer.
	17N	61W	Mer.	6th
	17N	62W	Mer.	6th
			Mer.	
			Mer.	
			Mer.	
			Mer.	
			Mer.	